

Partita in a minor

for Solo Flute

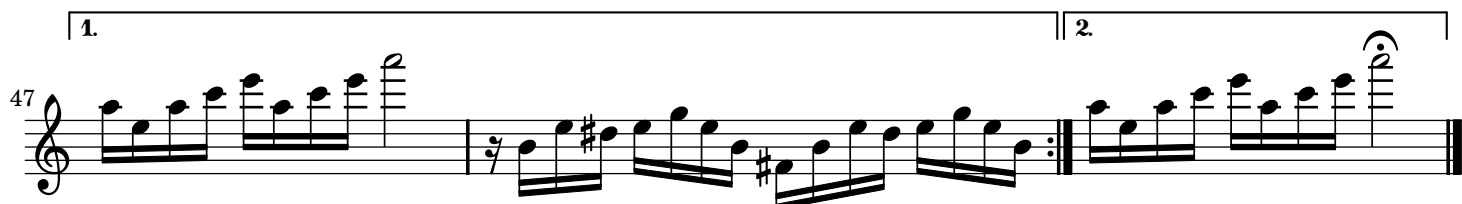
J. S. Bach
BWV 1013

Allemande

The image displays a musical score for the Allemande in A minor, BWV 1013 by J.S. Bach, specifically for solo flute. The score is written in treble clef with a common time signature (C). It consists of 24 measures, organized into 12 staves. The first measure begins with a key signature of one sharp (F#) and a common time signature. The piece is characterized by its rhythmic complexity, featuring a mix of eighth and sixteenth notes, often beamed together. The melody is highly technical, with frequent sixteenth-note runs and slurs. The score includes a first ending (marked '1.') and a second ending (marked '2.') starting at measure 19. The key signature changes to two flats (Bb and Eb) at measure 9 and remains there until the end of the piece. The notation includes various accidentals (sharps, flats, naturals) and articulation marks (accents, slurs).

Public Domain

free-scores.com



Corrente

5

9

13

16

19

22

26

30

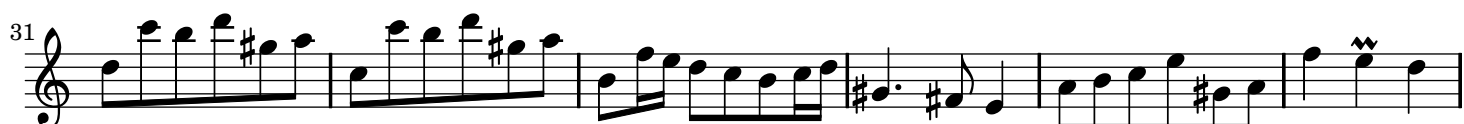
34

38

42



Sarabande



Bourée Angloise

6

11

17

23

29

34

40

45

50

55

60

65

Sheet music from www.MutopiaProject.org • Free to download, with the freedom to distribute, modify and perform.

Typeset using www.LilyPond.org by Jacob Shapiro. Reference: Mutopia-2008/08/22-1528

This sheet music has been placed in the public domain by the typesetter, for details see: <http://creativecommons.org/licenses/publicdomain>