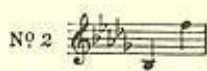


Love's dream. Besly.



GOIN' HOME

NEGRO SPIRITUAL

From the LARGO of the
NEW WORLD SYMPHONY

BY

ANTON DVOŘÁK

Op. 95

Words and Adaptation by

WILLIAM ARMS FISHER

Price 2/6 net.



ALFRED LENGNICK & Co. Ltd. London, W. 1.

CAWTHORNES LTD.

17a Rundle St., Adelaide, S.A.

MELBOURNE - SYDNEY - ADELAIDE - BENDIGO.

ANTON DVOŘÁK

(1841-1904)

ANTON DVOŘÁK was Director of the National Conservatory of Music in New York from his arrival in October, 1892, until he returned to his beloved Bohemia in April, 1895.

In 1893, longing to hear his native tongue and with something akin to homesickness he spent the summer in Spillville, Iowa, a small community of Bohemians. Here, as the outcome of his enthusiastic study of the folk music of the American negro, he wrote the symphony *From the New World*, Op. 95, his string-quartet, Op. 96, and string-quintet, Op. 97. In these significant works he did not incorporate negro themes but invented his own after the negro manner. He told me after his return that he had been reading Longfellow's *Hiawatha*, and that the wide-stretching prairies of the mid-west had greatly impressed him.

As a pupil of Dvořák I saw much of him at this time, and he was frankly annoyed at some of the statements made in the daily press regarding his "theories," for he had none. He was ever seeking fresh musical material and in the Negro spiritual he rejoiced to find something that from the old-world point of view was unhackneyed and moreover indigenous. He saturated himself in it and then simply and naturally gave rich expression to his "discovery" in the three works mentioned.

Between Anton Seidl, then conductor of the Philharmonic Orchestra, and Dvořák was a great bond of friendliness and sympathy. At the final private rehearsal of the *New World* Symphony, Seidl played each movement without a break, and between the movements left his desk and came to the back of the hall to exchange a few brief words with the composer. Seated with Dvořák he told me that he was then hearing his symphony for the very first time.

The work had been much written up in advance and at the first public performance, Friday afternoon, December 15, 1893, Carnegie Hall was crowded. At the close of the *Largo*, so moving was the performance, so touched to the heart was the great audience, that in the boxes filled with women of fashion and all about the hall people sat with the tears rolling down their cheeks. Neither before nor since have I seen a great audience so profoundly moved by absolute music. At the close of the movement and again at the end of the symphony, the modest simple-hearted, peasant composer was persuaded with difficulty to rise and acknowledge the ovation given him.

The *Largo*, with its haunting English horn solo, is the outpouring of Dvořák's own home-longing, with something of the loneliness of far-off prairie horizons, the faint memory of the red-man's bygone days, and a sense of the tragedy of the black-man as it sings in his "spirituals." Deeper still it is a moving expression of that nostalgia of the soul all human beings feel. That the lyric opening theme of the *Largo* should spontaneously suggest the words "Goin' home, goin' home" is natural enough, and that the lines that follow the melody should take the form of a negro spiritual accords with the genesis of the symphony.

Boston, July 21, 1922.

WM. ARMS FISHER.

GOIN' HOME.

Adapted from the Largo of the Symphony
"From the New World", Op. 95.

Words and adaptation by
WILLIAM ARMS FISHER.

ANTON DVOŘÁK.

Largo. (♩ = 52.)

Voice. *p* Go - in' home, go - in' home,

Piano. *mp* *f* *pp*

Red. sf *Red.*

I'm a - go - in' home; Qui - et - like, some still day, I'm jes' go - in' home.

mp *mf*

It's not far, jes' close by, Through an o - pen door; Work all done, care laid by,

N. B. When desired the text may be sung without dialect.

Op. 95. Copyright 1893, by N. Simrock.
This Setting Copyright MCMXXII by Oliver Ditson Company for U.S.A.
Property for the British Empire of Alfred Lengnick & Co. Ltd., London.
ALLAN & CO., Pty. Ltd., 276-278 Collins St. Melbourne.

B. 2609

gwine to fear no more. *p* Moth - er's there 'spect - in' me, Fa - ther's wait - in' too;
 (going) (there ex - pect - ing me,)

cresc. Lots o' folk gath-er'd there, *f* All the friends I knew, *p* All the friends I

knew. *p* Home, — *p* home, — *f* I'm go - in'

home!

p No-thin' lost, all's gain, No more fret nor pain, *cresc.* No more stum-blin' on the way,

No more long-in' for the day,— *dim.* Gwine to roam no more!
(Going)

p Morn-in' star lights the way, *mf* Res'-less dream all done; *cresc.* Shad-ows gone, break o' day,

Real life jes' be-gun. Dere's no break, ain't no end, Jes' a-liv-in' on;
(There's no break, there's no end,)

mancato xk

cresc. *f*

Wide a-wake, with a smile Go - in' on and on.

cresc. *f* *dim.*

pp

Go - in' home, go - in' home, I'm jes' go - in' home;—

pp

cresc.

It's not far, jes' close by Through an o - pen door.

cresc. *dim.*

mp *pp*

I'm jes' go - in' home. Go - in' home.

mp *p* *dim.* *pp* *ppp* *rit.*

TWO FAVOURITE WORKS IN VOCAL FORM

by

ANTON DVORAK

Humoreske

Op. 101. No. 7.

Obtainable in the following arrangements

As a song, "A LITTLE MAYTIME SONG"

In D \flat (B \flat to F), E \flat (C to G). Each 2/- net.

Text by H. LENGSELDER and N. INTRATOR.

English version by D. MILLAR CRAIG.

Two Part Song "THE SONG AND THE BREEZE". Words by Edith S. Tillotson,
Arranged by Ira B. Wilson. Allan's Part Song No. 223, price 4d, net.

Goin' Home

NEGRO SPIRITUAL

From the Largo of the "New World Symphony" Op. 95.

Words and Adaptation by

WILLIAM ARMS FISHER.

As a Song, C (A to E) D \flat (B \flat to F) E \flat (C to G) Each 2/6 net.

For MALE VOICES Allan's Part Song No. 242. Price 8d net.

„ MIXED „ „ „ „ „ „ 243. „ „ „ „

Obtainable from all Music Sellers or the Publishers,

ALLAN & CO.,

Proprietary Limited

MELBOURNE · SYDNEY · ADELAIDE · BENDIGO.