

STEPPIN' OUT WITH MY BABY



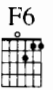
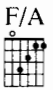
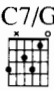

from the Motion Picture Irving Berlin's EASTER PARADE

Words and Music by
IRVING BERLIN

Medium Jump Tempo




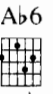
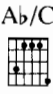

Dm7/A 
 Abdim7 
 Gm7 
 C7 
 Dm7/A 
 Abdim7 
 Gm7 
 C7 



F/A 
 C7/G 
 F6 
 F/A 
 C7/G 
 F6 

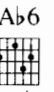
If I seem to scin-til - late — it's be - cause I've got a date, —



Ab/C 
 Eb7/Bb 
 Eb7 
 Ab6 
 Ab/C 
 Eb7/Bb 

a date with a pack - age of — the good things that



Eb7 
 Ab6 
 C/E 
 G7 
 Cmaj7 
 C6 

come with love. — You don't have to ask me, —



C/E G7 Cmaj7 C6 C/E G7 Cmaj7 C6

I won't waste your time. But if you should ask me —

Gm7 C9 F6 A9 Dm Dm/C

why I feel sub - lime, I'm — step - pin' out —

Gm/Bb A7 Dm Dm/C Gm/Bb A7 Dm Dm/C

with my ba - by. Can't go wrong — 'cause I'm in right. — It's for sure, —

Gm/Bb Em7b5 Dm Dm/F Gm6 G#dim7 A7 Dm6

not for may - be, that I'm all dressed up to - night. —

Dm



Dm/C



Gm/Bb



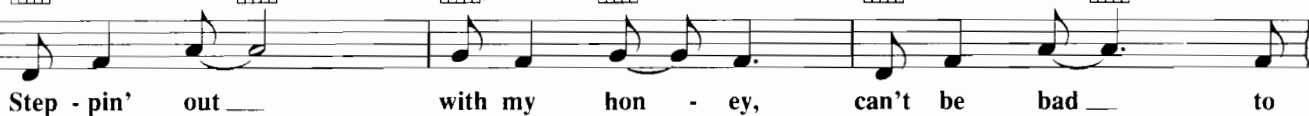
A7



Dm



Dm/C



Step - pin' out ___ with my hon - ey, can't be bad ___ to



Gm/Bb



A7



Dm



Dm/C



Gm/Bb



Em7b5



feel so good. ___ Nev - er felt ___ quite so sun - ny.



Dm



Dm/F



Gm6



G#dim7



A7



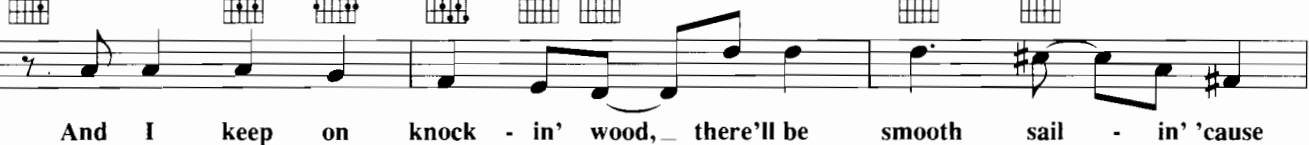
Dm6



D6



Dmaj7



And I keep on knock - in' wood, ___ there'll be smooth sail - in' 'cause



D



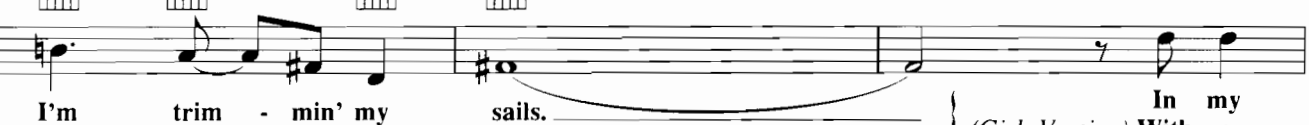
Dmaj7



D6

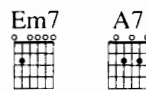
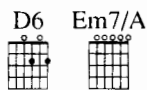
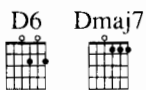
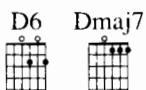


Dmaj7



I'm trim - min' my sails. ___ } (Girls Version) In my With a





top hat and my white tie and my tails
bright shine on my shoes and on my nails



step - pin' out with my ba - by, can't go wrong 'cause



I'm in right... Ask me when will the day be,



the big day may be to - night... be to - night...