

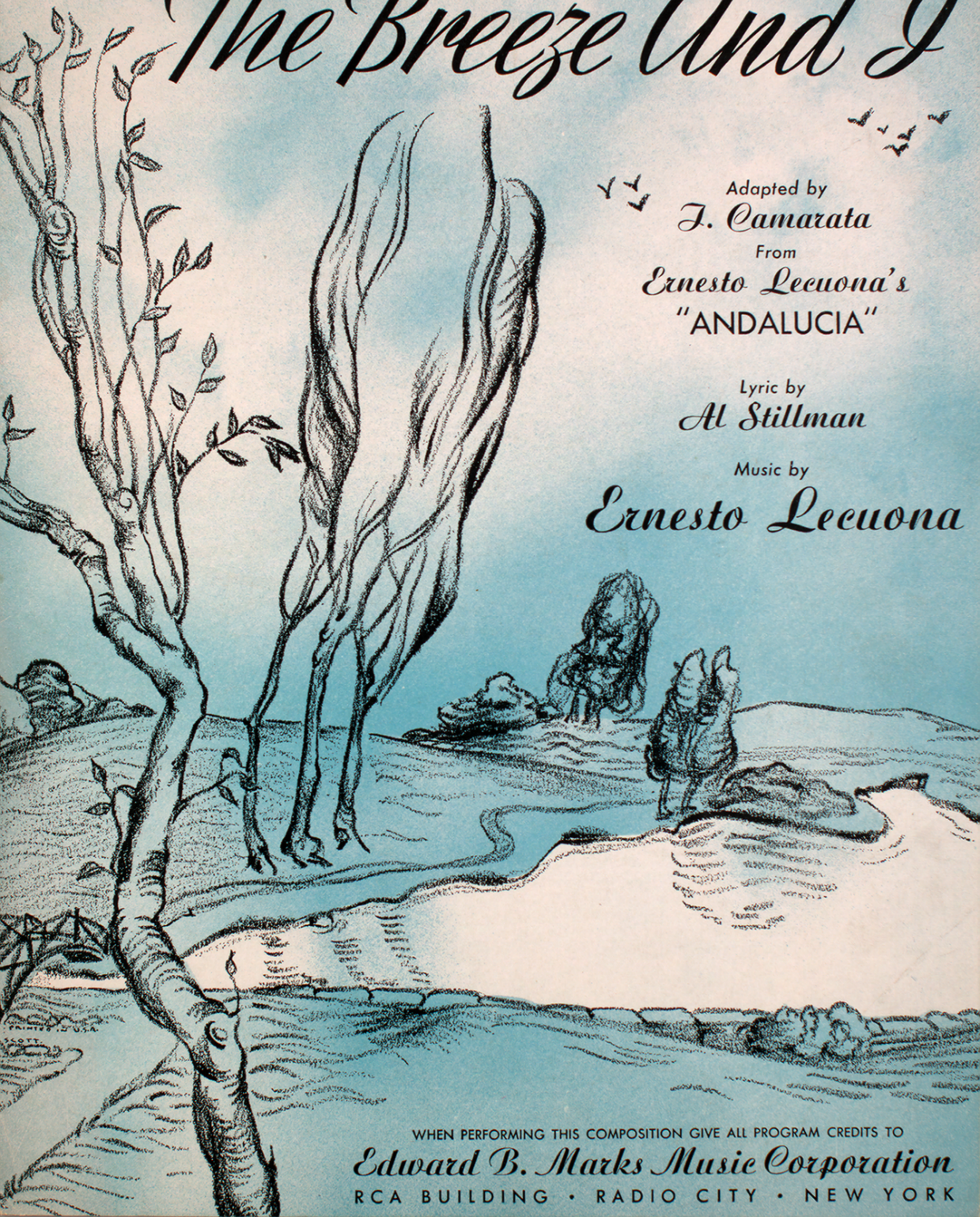
The Breeze And I

Adapted by
J. Camarata

From
Ernesto Lecuona's
"ANDALUCIA"

Lyric by
Al Stillman

Music by
Ernesto Lecuona



WHEN PERFORMING THIS COMPOSITION GIVE ALL PROGRAM CREDITS TO

Edward B. Marks Music Corporation

RCA BUILDING • RADIO CITY • NEW YORK

THE BREEZE AND I

Adapted from ERNESTO LECUONA'S "ANDALUCIA"

By T. CAMARATA

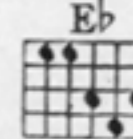
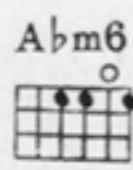
Lyric by
AL STILLMAN

Music by
ERNESTO LECUONA

Moderato

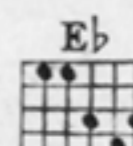
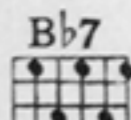
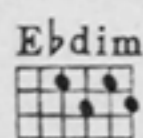
The piano introduction consists of two staves. The right hand starts with a series of chords and a melodic line, marked *mf*. The left hand provides a harmonic accompaniment. The piece concludes with a *rall. e dim.* marking and a final chord.

REFRAIN



The breeze and I are say - ing with a sigh —

The piano accompaniment for the first line of the refrain features a melodic line in the right hand and a harmonic accompaniment in the left hand. The dynamics are marked *mp - mf*.



That you no long - er care;

The piano accompaniment for the second line of the refrain continues the melodic and harmonic themes from the first line, ending with a final chord.

^{+) Diagrams are for Guitar, Symbols are for Ukulele and Banjo.}

Copyright MCMXXIX by Edward B. Marks Music Co.

This arrangement Copyright MCMXL by Edward B. Marks Music Corporation.

11,147-3

International Copyright Secured. All Rights Reserved. Printed in U. S. A.

Bb7 Eb Bb7 Eb Abm6 Eb

The breeze and I are whis-per-ing good - bye

Ebdim Bb7 Dbm Eb

To dreams we used to share.

Fm7 Cm7 Fm Fm7

Ours was a love song that

Ebmaj7 Eb6 Fm7 Ab Bb7

seemed con-stant as the moon, End - ing in a strange, mourn -

MEMORIES OF JOHANN STRAUSS VOCAL ALBUM

A Collection of the Waltz King's Most Beautiful Melodies

A Real Treat for Music Lovers at a Popular Price - 50c

ful tune; And all a -

bout me, they know you have de - part - ed with - out me and

cresc.

(Optional)

we won - der why, The breeze and

1. The I. The I.

(Guitar Tacet)

rall. e dim.