

WE ARE THE WORLD

Words and Music by LIONEL RICHIE
and MICHAEL JACKSON

Moderately slow

A(add2)/B

E/G#

F#m7

A/B

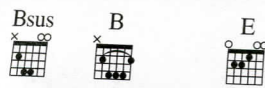
B7

The first system of piano accompaniment features a treble and bass clef. The treble clef has a melody starting with a quarter rest, followed by eighth and quarter notes. The bass clef provides a steady accompaniment with chords. A dynamic marking of *mf* is present. Chord diagrams for A(add2)/B, E/G#, F#m7, A/B, and B7 are shown above the staff.

The second system includes a vocal line and piano accompaniment. The vocal line begins with the lyrics "There comes a time" followed by a measure rest, then "when we heed a cer - tain call," followed by another measure rest and "when the". The piano accompaniment continues with a similar rhythmic pattern. Chord diagrams for E, A/E, B/E, and E are shown above the staff.

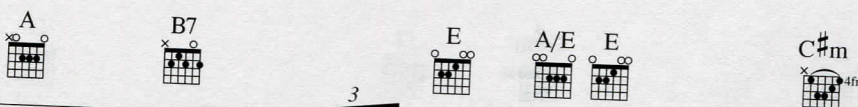
The third system continues the vocal line with the lyrics "world must come to - geth - er as one." followed by a measure rest and "There are". The piano accompaniment provides harmonic support. Chord diagrams for A, B7, E, B/E, E, A/E, and E are shown above the staff.

The fourth system concludes the vocal line with the lyrics "peo - ple dy - ing" followed by a measure rest, "and it's time to lend a hand" followed by a measure rest, "to life," followed by a measure rest, "the great - est gift" followed by a measure rest, and "of all." The piano accompaniment features a more active bass line with eighth notes. Chord diagrams for C#m, G#m, F#m7, and F#m7/A are shown above the staff.



We can't go on
Send them your heart

pre - tend - ing day - by day that some -
so they'll know that some - one cares - and their

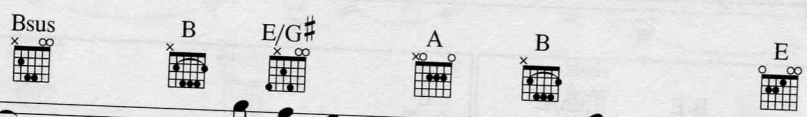


one, some-where will soon make a change.
lives will be strong-er and free.

We are all a part of God's
As God has shown us by



great big fam - i - ly and the truth, you know, love is all we need.
turn - ing stone to bread, so we all must lend a help - ing hand.



We are the world, we are the chil - dren, we are the ones

A B E

to make a bright - er day, - so let's - start giv - ing. There's a

C#m G#m

choice we're mak - ing, - - - we're sav - ing our - own lives, - it's true, -

F#m7 A/B

1 E A/E B/E A/E

- we make - bet - ter days, - just you - and me. -

E A/E B/E A/E

2 E

- - - - - When you're



down and out, — there seems no hope — at all, — but if you



just be - lieve, — there's no way we — can fall. — Let us



re - al - ize — that a change will on - ly come — when



we stand to - geth - er as one. We are the world, -

A B E

we are the chil - dren, we are the ones -

A B E

— to make a bright - er day, — so let's — start giv - ing. There's a

C#m G#m

choice we're mak - ing, — we're sav - ing our — own lives, — it's true; —

F#m7 A/B E E/G#

— we make — bet - ter days, — just you — and me. — We are the world, —

E F Bb C F

We are the world, we are the children, we are the ones

Bb C F

to make a brighter day, so let's start giving. There's a

Dm Am

choice we're making, we're saving our own lives, it's true;

Gm7 Bb/C F Eb/G F/A

we make better days, just you and me. We are the world,

Repeat and Fade