

DREAM ON

Words and Music by
STEVEN TYLER

Moderately slow

Fm



Cm/F



Fm6



Bbm6



Fm



C7sus



Fm



Fm7



Fm6



Bbm6



Ev-'ry time that I look in the mir - ror,

Fm



Fm7



Fm6



Bbm6



all these lines on my face get - tin' clear - er.

Fm



Fm7



Fm6



Bbm6



The past is gone;

Fm



Fm7



Fm6



Bbm6



it went by like _____ dusk to dawn. _____

Dm7b5



C



Dm7b5



Bbm6



Is- n't that the way _____ ev -'ry -bod-y's got _____ their dues _____ in life _____ to pay? _____

C



Dbmaj7



D7



C7



Fm



Eb



_____ I know no -bod - y knows

cresc.

f

Db



Eb



Fm



Eb



where _____ it comes and where it goes. _____ I know it's ev -'ry -bod-y's sin;

D \flat



E \flat



Fm



Fm7



you got to lose to know _____ how to win. _____

mp

Fm6



B \flat m6



Fm



Fm9



Fm



Fm



Fm7



Fm6



B \flat m6



Fm



Fm7



Half_ my life's in books' writ-ten pag - es, lived and learned from

mf

Fm6



B \flat m6



Fm



Fm7



fools and from sag - es.

You know _ it's

Fm6



Bbm6



Fm



Fm7



true,

all these things —

cresc.

Fm6



Bbm6



Fm



Eb



come back to you. —

Sing with me, sing for the years, —

Db



Eb



Fm



Eb



sing for the laugh - ter 'n' sing — for the tears. —

Sing with me if it's just for to - day, —

Dm7b5



Dbmaj7



Bbm



C



Bbm



C



Bbm



C



Bbm



C



may - be to - mor - row the good Lord — will take you a - way.

Bbm

C

Bbm

C

Bbm

C

Bbm

C

Bb

C



Dream on, — dream on, —



dream on, — dream your-self a dream come true.



Dream on, — dream on, —



dream on — and dream un - til your dream comes true.

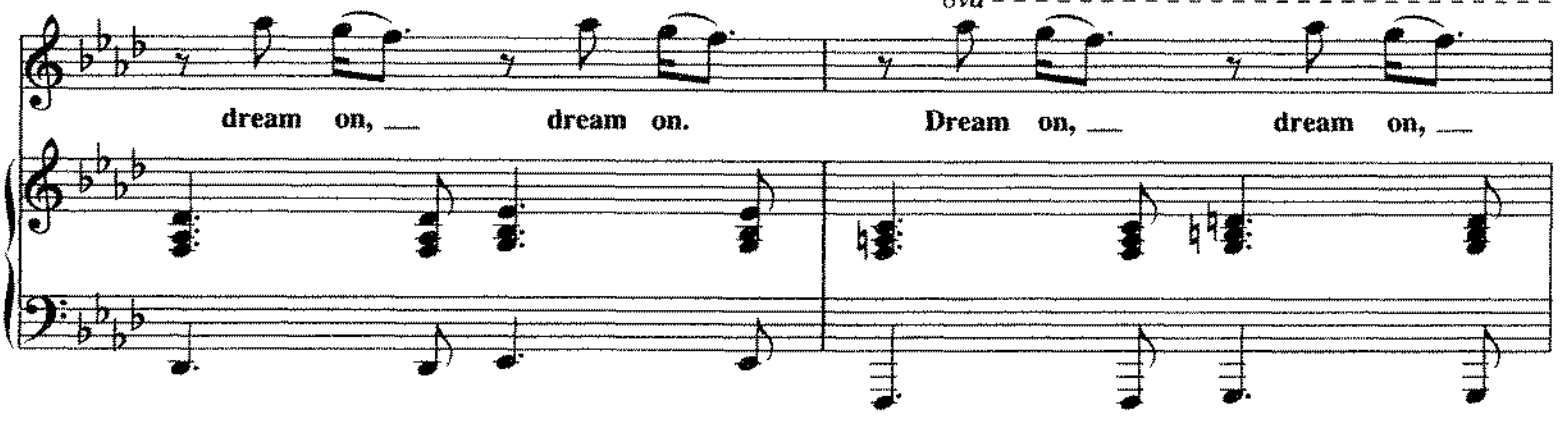
B \flat  C 

Dream on, — dream on, —



D \flat  E \flat  F  G 



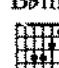


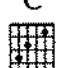




dream on, — dream on. Dream on, — dream on, —



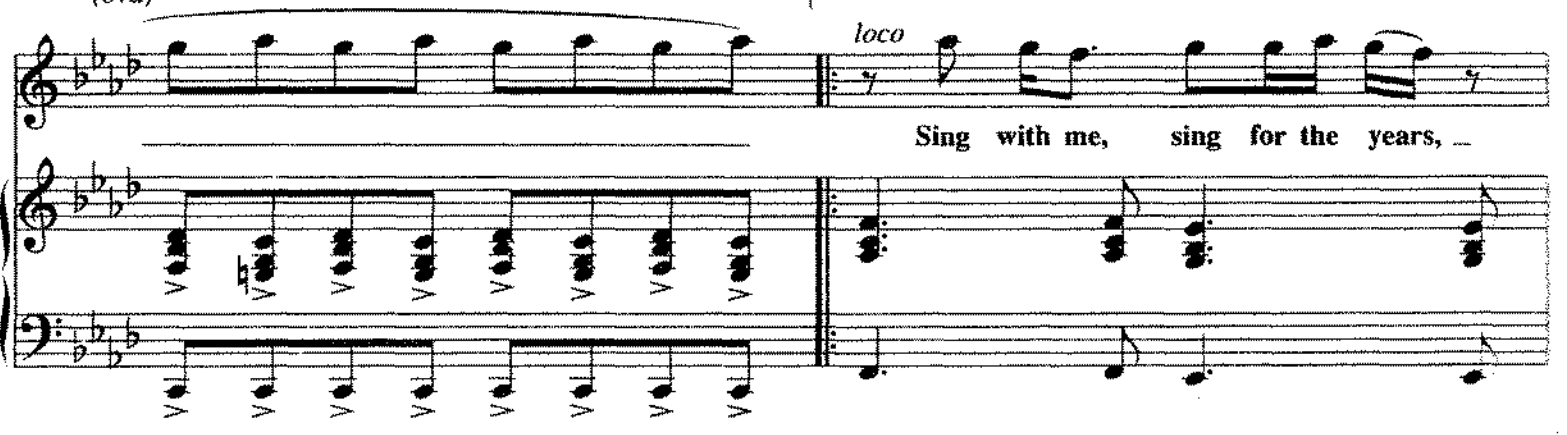
A \flat  B \flat  B \flat m  C  B \flat m  C  B \flat m  C  B \flat m  C 

dream on, — ah. Ah.



B \flat m  C  B \flat m  C  B \flat m  C  B \flat m  C  Fm  E \flat 

Sing with me, sing for the years, —



Db

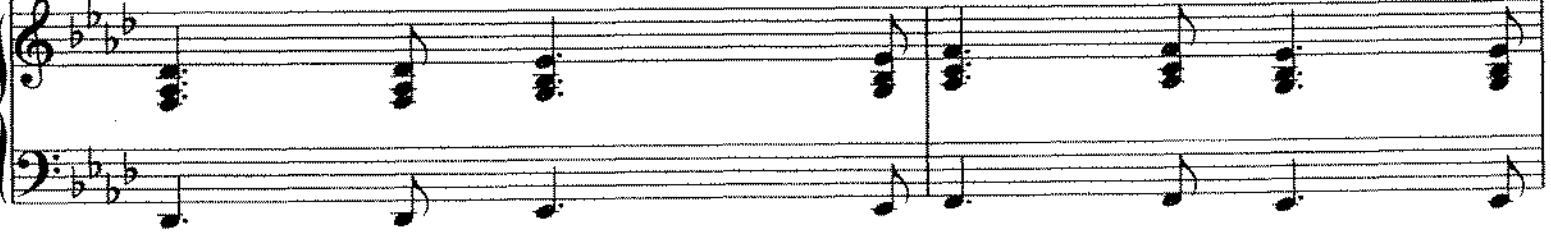
Eb

Fm

Eb



sing for the laugh-ter-'n' sing ___ for the tears. ___ Sing with me if it's just for to-day,--



1

Db

Eb

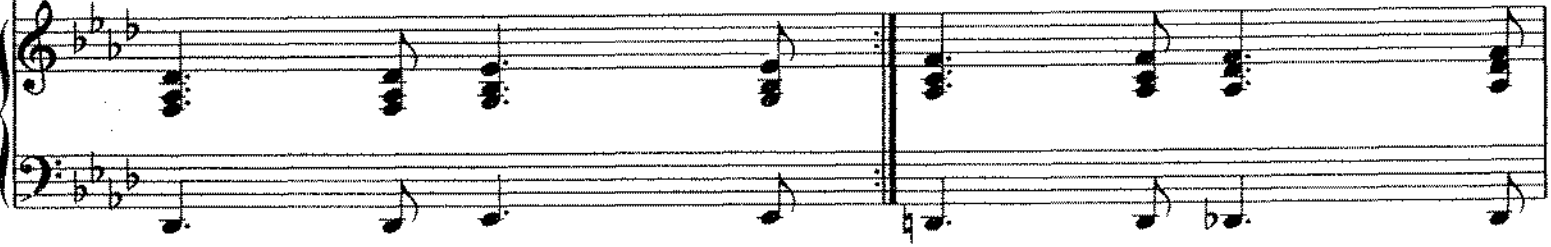
2

Dm7b5

Db



may-be to-mor-row the good Lord will take you a-way. may -be to-mor-row the good Lord will take you a -



Bbm

C

Bbm

C

Bbm

C

Bbm

C

Bbm

C

Bbm

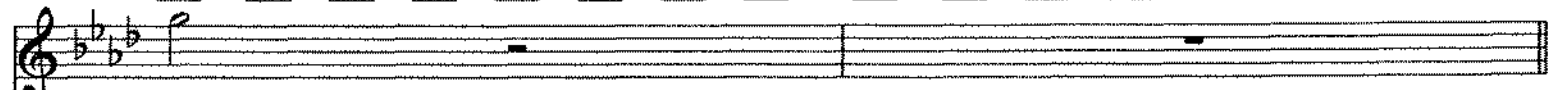
C

Bbm

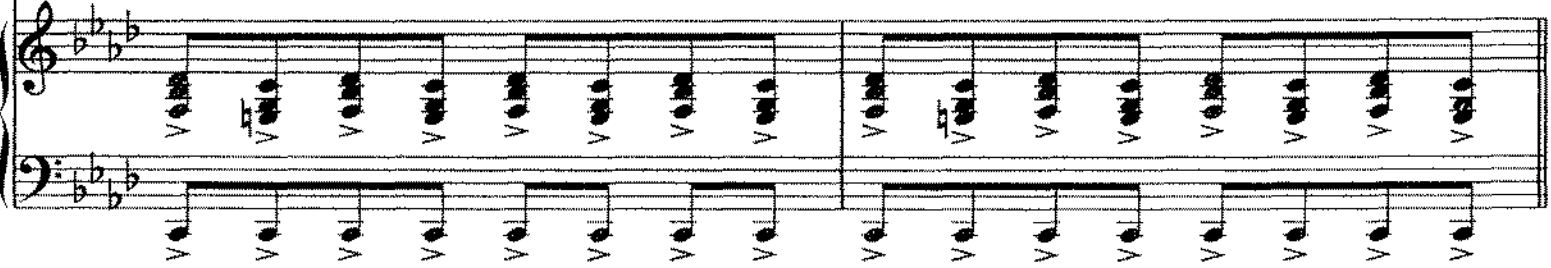
C

Bbm

C



way.



Repeat and Fade

Bbm

C

Bbm

C

Bbm

C

Bbm

C

Bbm

C

Bbm

C

Bbm

C

Bbm

C



mf

