

When You Believe

Music by Stephen Schwartz & Babyface. Music by Stephen Schwartz

Slowly



Man - y nights we've prayed, with no proof an - y - one could hear.

mf *mp legato*

with pedal

Detailed description: This system contains the first two measures of the piece. The vocal line starts with a whole rest, followed by a quarter note 'Man', a quarter note 'y', a quarter note 'nights', a quarter note 'we've', a quarter note 'prayed,', a quarter note 'with', a quarter note 'no', a quarter note 'proof', a quarter note 'an -', a quarter note 'y -', a quarter note 'one', a quarter note 'could', and a quarter note 'hear.'. The piano accompaniment features a melody in the right hand and a bass line in the left hand. A dynamic marking of *mf* is present at the start, and *mp legato* is marked for the piano part. A 'with pedal' instruction is at the bottom. A triplet of eighth notes is marked with a '3' above it.



In our hearts a hope - ful song— we bare - ly un - der - stood. Now

Detailed description: This system contains measures 3 and 4. The vocal line continues with 'In our hearts a hope - ful song—', 'we bare - ly un - der - stood.', and 'Now'. The piano accompaniment continues with the same melodic and bass lines. A dynamic marking of *mf* is present. A triplet of eighth notes is marked with a '3' above it.



we are not— a - fraid, al - though we know there's much to fear.

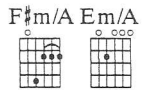
Detailed description: This system contains measures 5 and 6. The vocal line continues with 'we are not— a - fraid,', 'al - though we know there's much to fear.'. The piano accompaniment continues with the same melodic and bass lines. A dynamic marking of *mf* is present.



We were mov-ing moun - tains long- be - fore we knew we could.



There can be mir - a - cles, - when you be - lieve. - Though hope is frail, it's



hard to kill. Who knows what mir - a - cles - you can a - chieve? -



When you be - lieve, some - how you will. You will when - you - be - lieve. -

Bm



Bm



A



In this time of fear, when—

F#m7



Bm



Gmaj9



prayer so of - ten proves in vain, hope seems like the sum - mer birds, too—

Em7



F#m7



B



A/C#



swift - ly flown a - way.— Yet now I'm— stand - ing here, my

A/D



Esus4



G



D/F#



heart so full— I can't ex - plain,— seek - ing faith and speak - ing words— I

Em7

A/C#

E

nev - er thought I'd say:—

There can be mir - a - cles,—

B/D#

C#m 4fr.

G#m/B

Amaj7

G#m/B

F#m/B

when you be - lieve.——

Though hope is frail,

it's hard to kill.

(When you be - lieve.)

E

B/D#

Who knows what mir - a - cles—

you— can a - chieve?——

(You can a -

C#m 4fr.

G#m7 4fr.

Amaj7

G#m7 4fr.

chieve?)
When you be - lieve,——

some - how—— you will.——

F#m7

E

B/D#

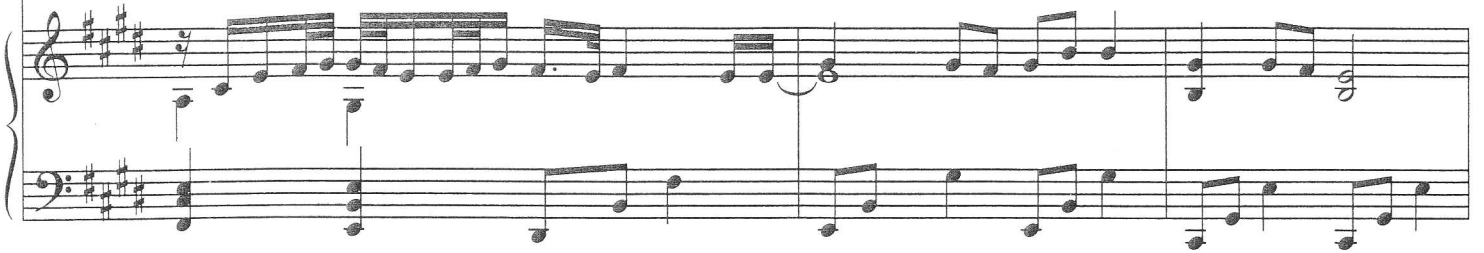
E

C#m7

4fr.



You will when you be- lieve.



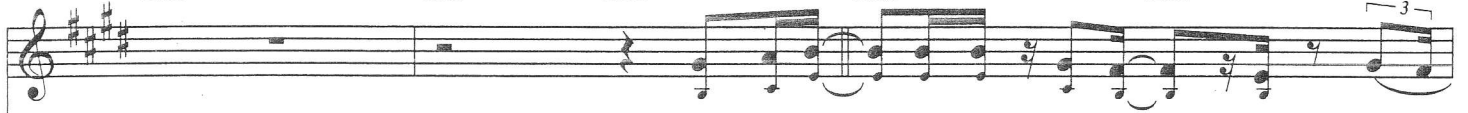
Amaj9

Bsus4

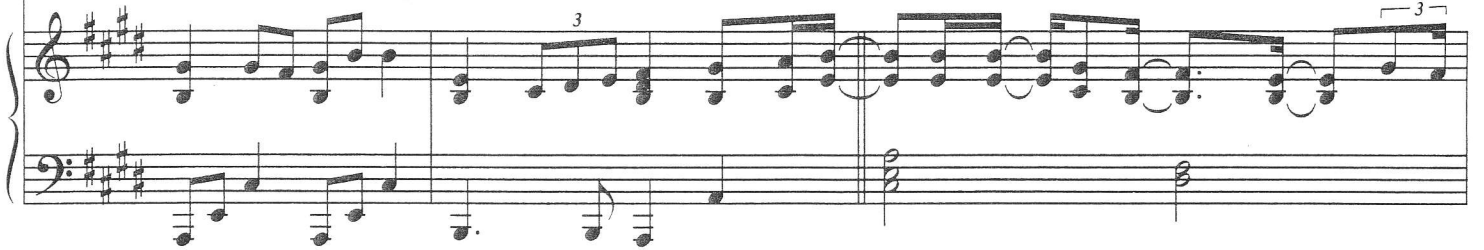
B/A

A/C#

B/D#



They don't al - ways hap - pen when you ask.



Esus4

E

B/D#

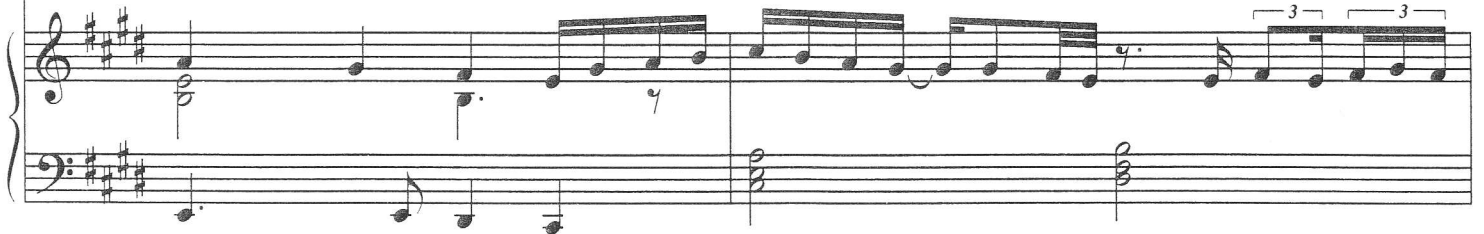
C#m7

A/C#

B/D#



And it's eas - y to give in to your fear.



Esus4

E

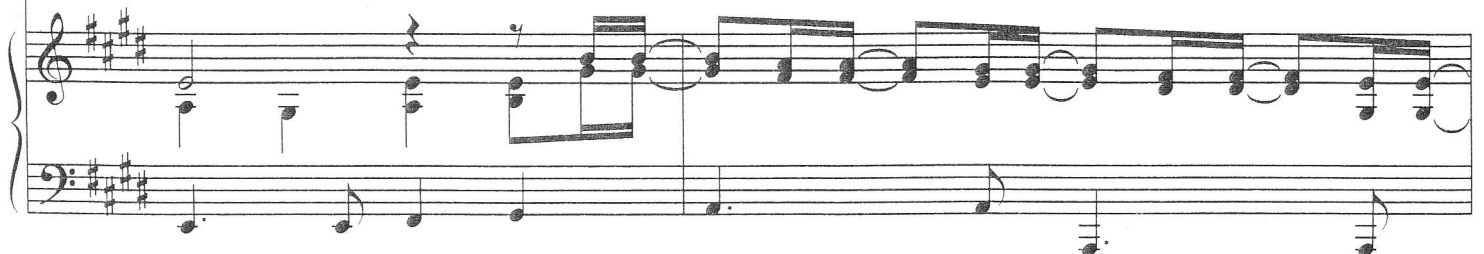
F#m7

E/G#

Asus2



But when you're blind - ed by your pain, can't see-



B



C#m7



4fr.

— your way— clear through— the rain, a small— but still re - sil - ient voice — says



A/B G#m/B F#m/B



help is ver - y near. There can be mir - a - cles, when you be - lieve.

cresc. *rit.* *f a tempo*



6fr.



4fr.



4fr.



4fr.



Though hope is frail, it's hard to kill. Who knows what mir - a - cles



6fr.



you can a - chieve? When you be - lieve, some - how you will,



now you will. You will when you be - lieve.



Tacet

You will when you, you will when you be -

F#

D#m 6fr.

F#

lieve, just be - lieve, just be -

D#m 6fr.

F#

lieve. You will when you be - lieve.