

If you are in doubt

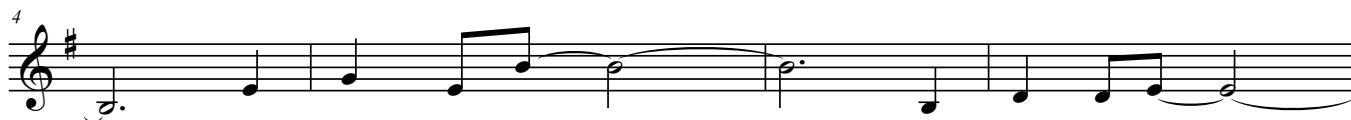
Enrico Blatti Ennio Speranza

Allegro $\text{♩} = 100$



If you are in doubt _____ You will be right _____

E m7



Be - cause your doubts _____ Will lead to truth _____



If trou - bles grow _____ Re - mem - ber

C7

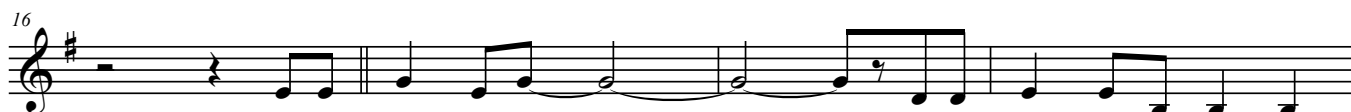


that Your doubts are gold _____ To get to your goal!

E m7

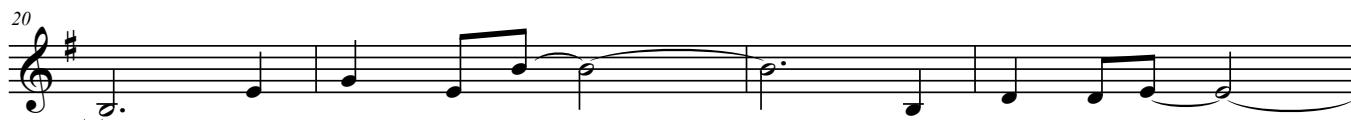
C7

B7



If you solve a doubt _____ It's be - cause you had _____ it _____

E m7



but now you're safe _____ in your be - liefs _____



You should be - lieve _____ In all your

C7



doubts They are the door _____ To get to your goal!

E m7

C7

B7

E m7




To get! To get! To get to your goal! _____

B7

C#m7(b5)

F#7sus4


36



E - very strong con - vin - ction needs to go throug trou - bles

B m E m7 A 7


40



E - very lan - ding place should bear a doubt.

D $\frac{D7}{C}$ $\frac{G}{B}$ $\frac{Gm}{B^b}$ $\frac{D}{A}$ A 7sus4


44



Help me to _____ doubt, oh, my Lord! _____

D $\frac{Em7}{D}$


48



Help me to _____ love, oh my love!

$\frac{A7}{C\#}$ DMaj7(sus4) DMaj7 $\frac{DMaj7}{C\#}$


52



Help me to doubt oh my Lord. _____

B m $\frac{Bm7}{A}$ $\frac{E7}{G\#}$


56



Help me to doubt oh _____ lord.

GMaj7 F#7 F° F#7sus4 F#7


60



E - very strong con - vin - ction needs to go throug trou - bles

B m E m7 A 7

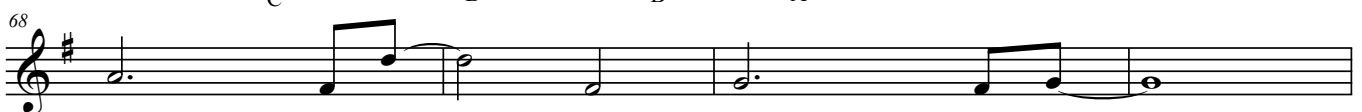
64



E - very lan - ding place should bear a doubt.

D $\frac{D7}{C}$ $\frac{G}{B}$ $\frac{Gm}{B^b}$ $\frac{D}{A}$ A 7sus4


68



Help me to _____ doubt, oh, my Lord! _____

D $\frac{Em7}{D}$

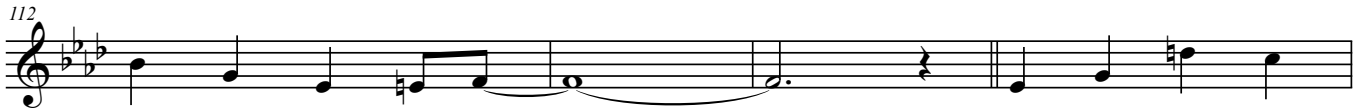
108



doubts are gold _____ To get to your goal! To get! To get!

C7


112



To get to your goal! _____ E - very strong con -

D m7(b5) G7 C m


116



vin - ction needs to go throug trou - bles E - very lan - ding

F m7 Bb7 Eb Eb7
Db


120



place should bear a doubt. Help me to _____

Ab C Abm B Eb Bb7sus4 Eb


124



_____ doubt, oh, my Lord! _____ Help me to _____

F m7 Eb Bb7 D


128



_____ love, oh my love! Help me

EbMaj7(sus4) EbMaj7 EbMaj7 C m
D


132



to doubt oh my Lord. _____ Help me

Cm7 Bb F7 A AbMaj7


136



to doubt oh _____ Lord. E - very strong con -

G7 Gb G7sus4 G7 C m

140



vin - ction needs to go throug trou - bles E - very lan - ding

F m7 Bb7 Eb Eb7
Db

144

place should bear a doubt. Help me to —

$\frac{A\flat}{C}$ $\frac{A\flat m}{B}$ $\frac{E\flat}{B\flat}$ $B\flat 7sus4$ $E\flat$ *ripete al libitum sfumando*

148

— doubt, oh, my Lord! — Help me to —

$\frac{F m7}{E\flat}$ $\frac{B\flat 7}{D}$

152

— love, oh my love!

$E\flat Maj7(sus4)$ $E\flat Maj7$