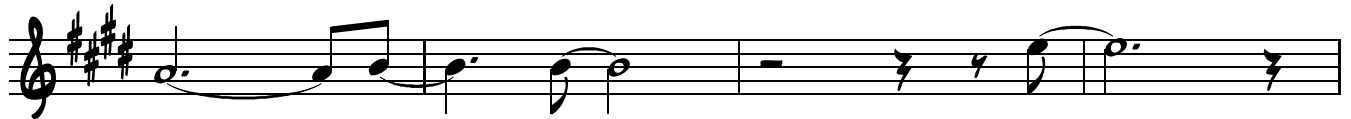


# TRUMPET 2

# ARREBATADORA

SALSA - PELLIN RODRIGUEZ

## INTRO



**FINE**



## VERSE

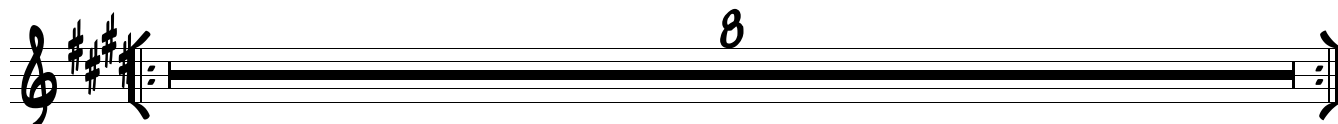
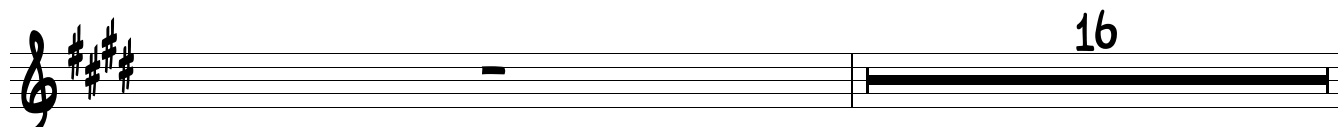
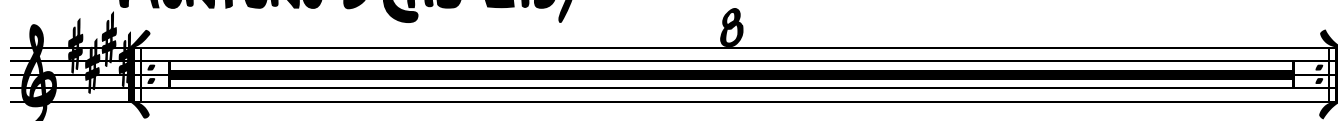


## CHORUS/BRIDGE



## INTERLUDE 1



**MONTUNO 1 (AO LIB)****MAMBO (ON CUE W/3)****INTERLUDE 2****MONTUNO 2 (AO LIB)****D.C. TO FINE (ON CUE)**

**BARTIONE SAX**  
(ORIG. FROM TROMB 2)

# ARREBATADORA

SALSA - PELLIN RODRIGUEZ

## INTRO

The Intro section consists of three staves of music. The first staff contains a sequence of eighth and quarter notes. The second staff features a half note followed by a quarter rest, then eighth notes. The third staff concludes with a quarter note and a half note, ending with a fermata and the word "FINE".

## VERSE

The Verse section is a single staff of music starting with a triplet of eighth notes, followed by quarter notes and a half note.

## CHORUS/BRIDGE

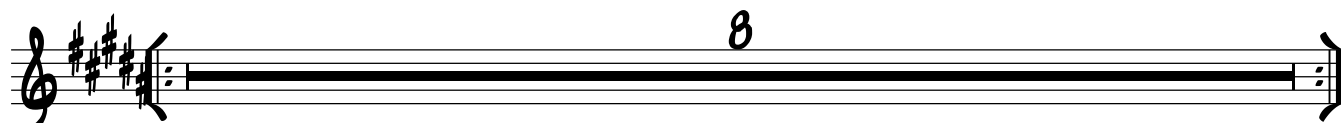
The Chorus/Bridge section is a single staff of music featuring a triplet of eighth notes, quarter notes, and a first/second ending structure with two different melodic paths.

## INTERLUDE 1

Interlude 1 is a single staff of music with a sequence of eighth and quarter notes, ending with a fermata.

## MONTUNO 1 (AD LIB)

Montuno 1 (Ad Lib) is a single staff of music consisting of a long horizontal line with a fermata, indicating an improvised section of 8 measures.

**MAMBO (ON CUE W/3)****(REPEAT 6X)****INTERLUDE 2****MONTUNO 2 (AD LIB)****D.C. TO FINE (ON CUE)**

# BASS

# ARREBATADORA

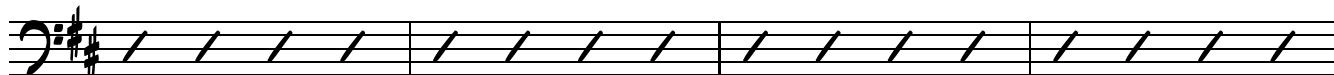
SALSA - PELLIN RODRIGUEZ

## INTRO

D EM<sup>7</sup> A<sup>7</sup> D AM<sup>7</sup> D<sup>7</sup>



G AM<sup>7</sup> D<sup>7</sup> G G

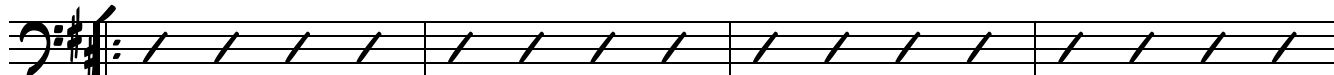


A G F<sup>#</sup>M EM D D FINE

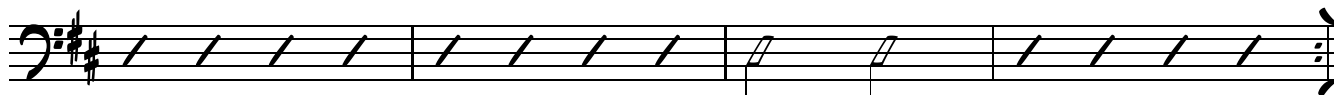


## VERSE

DMA<sup>7</sup> DMA<sup>7</sup> EM<sup>7</sup> F<sup>#</sup>M<sup>7</sup> FM A<sup>7</sup>

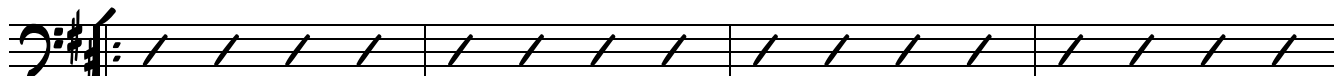


A<sup>7</sup> EM<sup>7</sup> EM<sup>7</sup> A<sup>7</sup> DMA<sup>7</sup>



## CHORUS/BRIDGE

D D F<sup>#</sup>M FM EM<sup>7</sup> A<sup>7</sup>



EM<sup>7</sup> A<sup>7</sup> EM<sup>7</sup> A<sup>7</sup> 1. D 2. D



## INTERLUDE 1

EM<sup>7</sup> A<sup>7</sup> EM<sup>7</sup> A<sup>7</sup> D



**MONTUNO 1 (AD LIB)**

EM<sup>7</sup>                      A<sup>7</sup>                      DMA<sup>7</sup>                      BM<sup>7</sup>

B<sup>7</sup>                      EM<sup>7</sup>                      A<sup>7</sup>                      D

**MAMBO (ON CUE W/3)**

DMA<sup>7</sup>                      EM<sup>7</sup>                      A<sup>7</sup>                      (REPEAT 6X)  
DMA<sup>7</sup>

DMA<sup>7</sup>                      EM                      A<sup>7</sup>

**INTERLUDE 2**

EM<sup>7</sup>                      A<sup>7</sup>                      EM<sup>7</sup>                      A<sup>7</sup>                      D

**MONTUNO 2 (AD LIB)**

EM<sup>7</sup>                      A<sup>7</sup>                      DMA<sup>7</sup>                      BM<sup>7</sup>

B<sup>7</sup>                      EM<sup>7</sup>                      A<sup>7</sup>                      D

**D.C. TO FINE (ON CUE)**

PIANO

# ARREBATADORA

SALSA - PELLIN RODRIGUEZ

## INTRO

D EM7 A7 D Am7 D7 G

Am7 D7 G G

A G F#M EM D D FINE

## VERSE

DMA7 DMA7 EM7 F#M7 FM A7

A7 EM7 EM7 A7 DMA7

## CHORUS/BRIDGE

D D F#M FM EM7 A7

EM7 A7 EM7 A7 D 1. 2. NC.

**INTERLUDE 1**

EM<sup>7</sup> A<sup>7</sup> EM<sup>7</sup> A<sup>7</sup> D

**MONTUNO 1 (AO LIB)**

EM<sup>7</sup> A<sup>7</sup> DMA<sup>7</sup> BM<sup>7</sup>

B<sup>7</sup> EM<sup>7</sup> A<sup>7</sup> D

**MAMBO (ON CUE W/3)**

(REPEAT 6X)

DMA<sup>7</sup> DMA<sup>7</sup> EM<sup>7</sup> A<sup>7</sup> DMA<sup>7</sup>

DMA<sup>7</sup> EM A<sup>7</sup>

**INTERLUDE 2**

EM<sup>7</sup> A<sup>7</sup> EM<sup>7</sup> A<sup>7</sup> D

**MONTUNO 2 (AO LIB)**

EM<sup>7</sup> A<sup>7</sup> DMA<sup>7</sup> BM<sup>7</sup>

B<sup>7</sup> EM<sup>7</sup> A<sup>7</sup> D

**D.C. TO FINE (ON CUE)**



TENOR SAX

# ARREBATADORA

SALSA - PELLIN RODRIGUEZ

## INTRO

Musical notation for the Intro section, consisting of three staves of music in 4/4 time with a key signature of three sharps (F#, C#, G#). The first staff contains a melodic line with eighth and quarter notes. The second staff continues the melody with some rests. The third staff concludes the intro with a 'FINE' marking.

## VERSE

Musical notation for the Verse section, consisting of one staff of music in 4/4 time with a key signature of three sharps. It begins with a triplet of eighth notes.

## CHORUS/BRIDGE

Musical notation for the Chorus/Bridge section, consisting of one staff of music in 4/4 time with a key signature of three sharps. It features two triplet markings and two first/second ending brackets.

## INTERLUDE 1

Musical notation for Interlude 1, consisting of one staff of music in 4/4 time with a key signature of three sharps. It features a melodic line with eighth and quarter notes.

## MONTUNO 1 (AD LIB)

Musical notation for Montuno 1 (Ad Lib), consisting of one staff of music in 4/4 time with a key signature of three sharps. It is a long, continuous line of music marked with an '8' above it.

**MAMBO (ON CUE W/3)****(REPEAT 6X)**

Musical notation for Mambo (On Cue w/3). The first staff shows a melodic line starting with a rest, followed by eighth and quarter notes. The second staff shows a rhythmic accompaniment of eighth notes.

**INTERLUDE 2**

Musical notation for Interlude 2. A single staff with a melodic line consisting of quarter and eighth notes.

**MONTUNO 2 (AO LIB)**

Musical notation for Montuno 2 (Ao Lib). A single staff with a long horizontal line indicating a sustained note or rest, with a fermata symbol above it.

**D.C. TO FINE (ON CUE)**

# TROMBONE

# ARREBATADORA

SALSA - PELLIN RODRIGUEZ

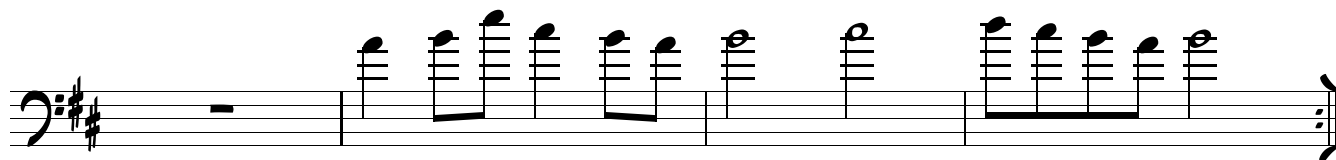
## INTRO



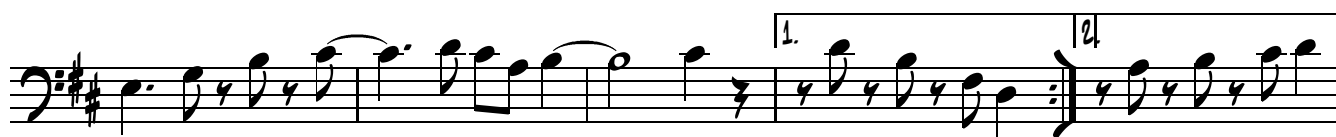
## FINE

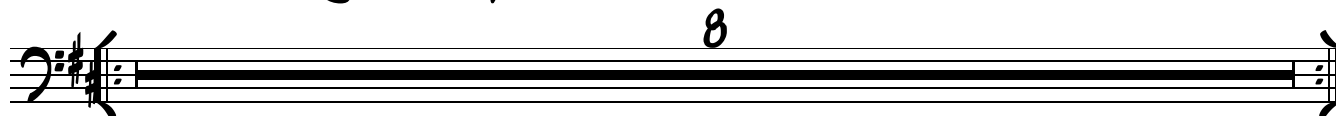


## VERSE



## CHORUS/BRIDGE



**INTERLUDE 1****MONTUNO 1 (AD LIB)****MAMBO (ON CUE W/3)****(REPEAT 6X)****INTERLUDE 2****MONTUNO 2 (AD LIB)****D.C. TO FINE (ON CUE)**

**TROMBONE 2**  
(ORIG. TENOR SAX)

# ARREBATADORA

SALSA - PELLIN RODRIGUEZ

## INTRO

Musical notation for the Intro section, consisting of three staves of music in bass clef with a key signature of one sharp (F#) and a common time signature (C). The first staff contains a sequence of eighth and quarter notes. The second staff has a whole rest followed by eighth notes. The third staff concludes with a "FINE" marking.

## VERSE

Musical notation for the Verse section, consisting of one staff of music in bass clef with a key signature of one sharp (F#) and a common time signature (C). It begins with a triplet of eighth notes.

## CHORUS/BRIDGE

Musical notation for the Chorus/Bridge section, consisting of one staff of music in bass clef with a key signature of one sharp (F#) and a common time signature (C). It features triplet markings and first/second endings.

## INTERLUDE 1

Musical notation for Interlude 1, consisting of one staff of music in bass clef with a key signature of one sharp (F#) and a common time signature (C).

## MONTUNO 1 (AD LIB)

Musical notation for Montuno 1 (Ad Lib), consisting of one staff of music in bass clef with a key signature of one sharp (F#) and a common time signature (C). It is a long, continuous line with an "8" above it, indicating an 8-measure phrase.

**MAMBO (ON CUE W/3)****(REPEAT 6X)****INTERLUDE 2****MONTUNO 2 (AD LIB)****D.C. TO FINE (ON CUE)**

# TRUMPET 1

# ARREBATADORA

SALSA - PELLIN RODRIGUEZ

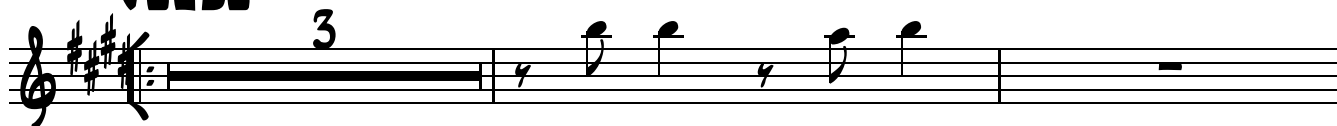
## INTRO



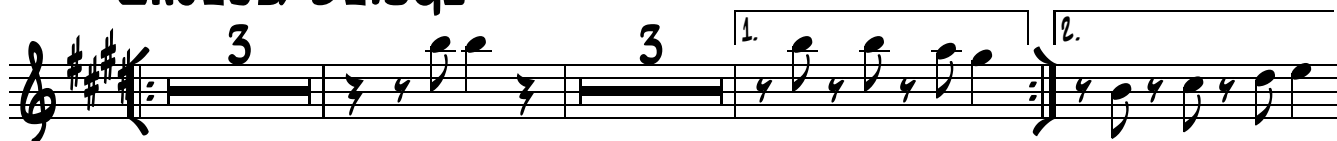
**FINE**



## VERSE

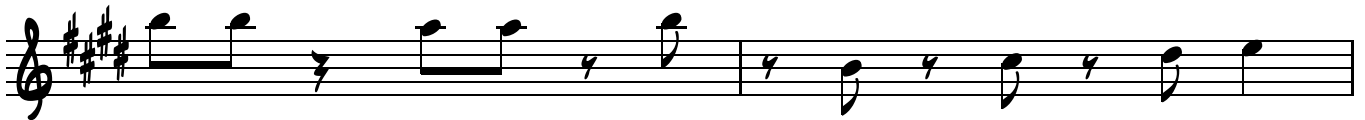
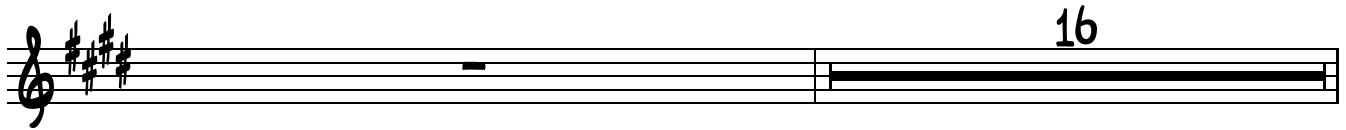
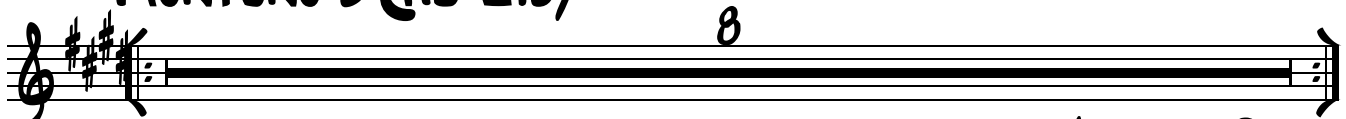


## CHORUS/BRIDGE



## INTERLUDE 1



**MONTUNO 1 (AD LIB)****MAMBO (ON CUE W/3)****INTERLUDE 2****MONTUNO 2 (AD LIB)****D.C. TO FINE (ON CUE)**



**ALTO SAX**  
(ORIG. FROM TENOR SAX)

# ARREBATADORA

SALSA - PELLIN RODRIGUEZ

## INTRO



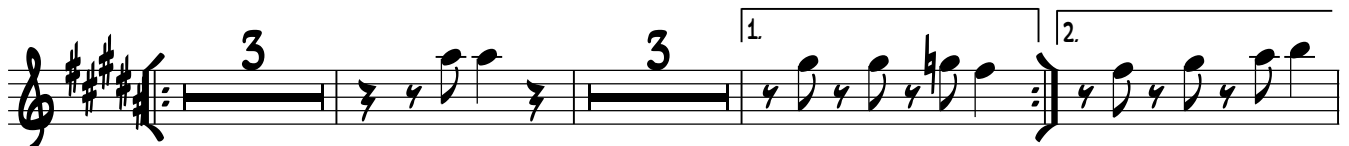
**FINE**



## VERSE



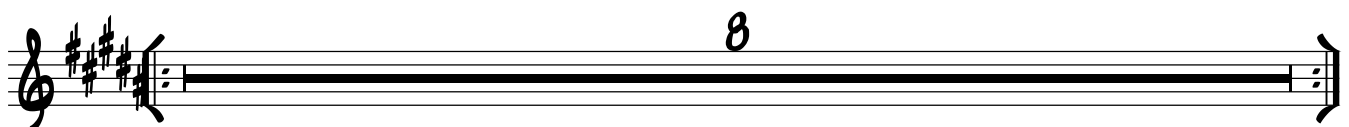
## CHORUS/BRIDGE

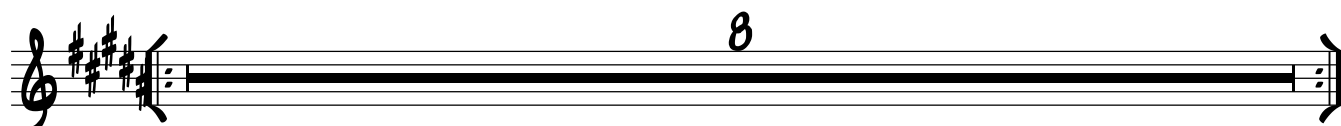


## INTERLUDE 1



## MONTUNO 1 (AD LIB)



**MAMBO (ON CUE W/3)****(REPEAT 6X)****INTERLUDE 2****MONTUNO 2 (AD LIB)****D.C. TO FINE (ON CUE)**