

Trust His Heart

BABBY MASON and EDDIE CARSWELL

Arr. by Don Marsh

Gently (q=100)

D^b E^bm/D^b A^b/D^b D^b
 G^bmaj⁷ A^b B^b2 B^b

mf

p.

p.

The piano introduction consists of two systems of music. The first system features a treble clef with a melody of eighth and sixteenth notes, and a bass clef with a simple accompaniment. The second system continues the accompaniment with chords in the treble clef.

6 *unis.*
SA - *mf*

All things work for our good though

B^b E^b/B^b B^b

This system contains the first line of the vocal melody and its piano accompaniment. The vocal line starts with a box containing the number 6 and the instruction 'unis. SA - mf'. The piano accompaniment includes chords in the treble clef.

some-times we can't see how they could;

F⁷/B^b D⁷/B^b B^b

This system contains the second line of the vocal melody and its piano accompaniment. The piano accompaniment includes chords in the treble clef.

Strug-gles that break our hearts in two some-times

$D7_{sus}/A$ $D7(b9)$ G_{sus}^4 G_m

blind us to the truth.

$A^b_{maj}9$ $F7_{sus}$ $F7$

14 SOPRANOS (ATB-Ooo)

Our Fa - ther knows what's best for us,

Ooo

B^b C_m/B^b

His ways are not our own; *unis.*
ALL sing

Ooo So when your

Cm/A D D/F# Gm Dm/F

18

path-way grows dim and you just can't see Him, re-

E^b B^b/D Gm⁷

mem-ber, He's still on the throne!

B^b/C C⁹ A^b Cm⁷/G F⁷_{sus} F⁷

23

God is too wise — to be mis - tak - en, —

B^b B^b/D E^b Cm^7

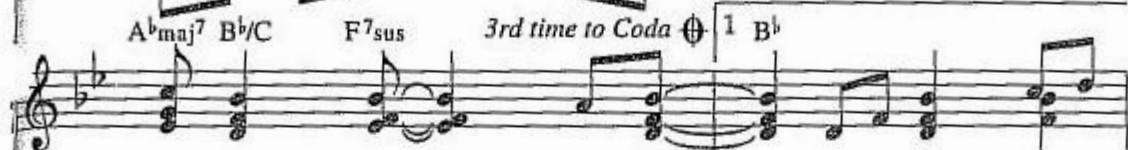
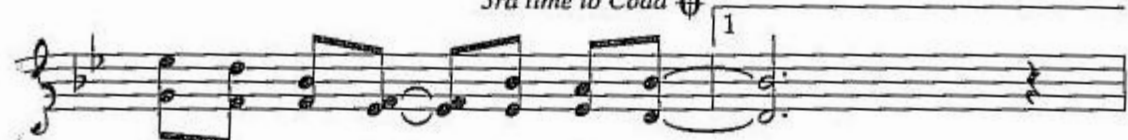
God is too good — to be un - kind; — For when you

E^b/F F^7 B^b2 B^b E^b/F

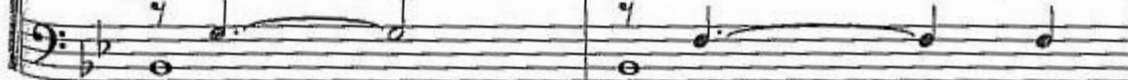
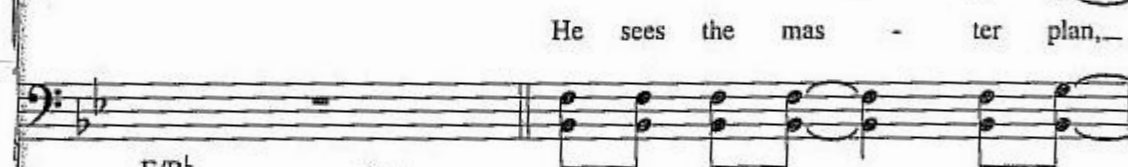
27

don't un - der - stand, — when you don't see His plan, — when you

B^b B^b/D E^b Cm/E^b

3rd time to Coda \oplus 

32



in His hands;— So don't live as those who have—

D7/B^b B^b D⁷sus/A D7(^b9) Gsus⁴₂

— no hope,— all our hope is found— in Him.—

Gm A^bmaj⁹

We walk in pres - ent know - ledge,— but

F⁷sus F⁷ B^b Cm/B^b

He sees the first— and the last; And like a

Cm/A D D/F# Gm Dm/F

44

tap - es - try, — He's weav - ing you and me — to

E^b B^b/D Gm⁷

some-day be just like Him!

B^b/C C⁹ A^b Cm⁷/G F⁷_{sus} F⁷

2 50

He a-lone_ is faith-ful_ and_

TB - *unis.*

2 B^b B^b maj⁷/D E^b F/E^b

Detailed description: This system contains the first two lines of music. The top line is a vocal line in G minor with a treble clef, starting with a whole rest and a fermata. The second line is a tuba line in bass clef, starting with a whole rest and a fermata, then playing a melodic line for the lyrics. The piano accompaniment consists of two staves (treble and bass clefs) with chords and a bass line. Chords are labeled as B^b, B^b maj⁷/D, E^b, and F/E^b. The piano part includes a bass line with eighth and quarter notes.

true, He a-lone_ knows what is best for

Dm⁷ Gm⁷ Cm⁷ F/C Cm⁷ F/E^b

Detailed description: This system contains the next two lines of music. The vocal line continues with a whole rest and a fermata, then a melodic line for the lyrics. The tuba line continues with a whole rest and a fermata, then a melodic line. The piano accompaniment continues with chords labeled Dm⁷, Gm⁷, Cm⁷, F/C, Cm⁷, and F/E^b. The bass line continues with eighth and quarter notes.

D.S. al Coda

you.

D.S. al Coda

D⁷ sus D⁷ Cm⁹ E^b/F F E^b/F

Detailed description: This system contains the final two lines of music. The vocal line has a whole rest and a fermata, then a whole note for the word 'you.'. The tuba line has a whole rest and a fermata. The piano accompaniment concludes with chords labeled D⁷ sus, D⁷, Cm⁹, E^b/F, F, and E^b/F. The bass line concludes with quarter notes.

CODA

mf unis.

When you can't trace His hand,—

CODA B^b A^b maj⁷ B^b/C F⁷ sus

mf

58

trust His heart,—

Cm⁷/F F⁷ E^b maj⁷ B^b²/D

p.

div.

trust His heart.

Cm⁹ E^b/F F⁷ B^b

Sub. Sub.