

Still

Words and Music by Reuben Morgan

F2 A^m2 C/G G

The first system of piano accompaniment for the song 'Still'. It features a treble and bass clef with a 4/4 time signature. The melody in the treble clef starts with a quarter rest, followed by eighth notes G4, A4, B4, and C5. The bass clef provides a rhythmic accompaniment with eighth notes G2, A2, B2, and C3. Chord symbols F2, A^m2, C/G, and G are placed above the treble staff.

A S C G/B A^m F D/F#

The first system of the vocal melody for 'Still'. It begins with a square box containing the letter 'A' and a symbol resembling a stylized 'S' or a clef. The melody consists of quarter notes C4, G4, A4, B4, and C5, with a slur over the last three notes. Chord symbols C, G/B, A^m, F, and D/F# are placed above the staff.

Verse 1: Hide me now un - der Your wings.
Verse 2: rest my soul in Christ a - lone.

The second system of piano accompaniment. The treble clef continues the melody with eighth notes G4, A4, B4, and C5, with a slur over the last three notes. The bass clef continues with eighth notes G2, A2, B2, and C3. Chord symbols C, G/B, A^m, F, and D/F# are placed above the treble staff.

G^{sus4} G C/E F

The second system of the vocal melody. It starts with a square box containing the letter 'A' and a symbol resembling a stylized 'S'. The melody consists of quarter notes G4, A4, B4, and C5, with a slur over the last three notes. Chord symbols G^{sus4}, G, C/E, and F are placed above the staff.

Co - ver me with -
Know His pow'r in

The third system of piano accompaniment. The treble clef continues the melody with eighth notes G4, A4, B4, and C5, with a slur over the last three notes. The bass clef continues with eighth notes G2, A2, B2, and C3. Chord symbols G^{sus4}, G, C/E, and F are placed above the treble staff.

D^{m7}

G

C/E

B

FX

F

G



in Your migh - ty and Hand. Chorus: When the o - ceans rise and thun - ders roar,
qui - et - ness and trust.



C^{sus4}

C

F

G

A^m

C/E



I will soar with You a - bove the storm. Fa - ther, You are



Last to Coda



F

G

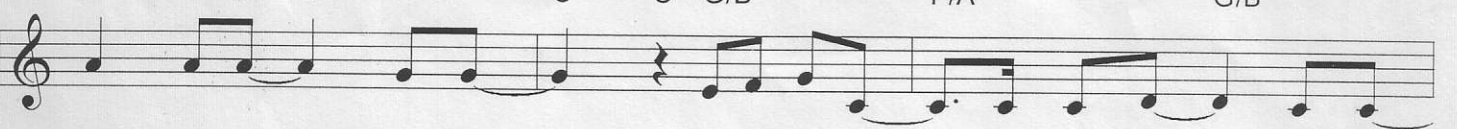
C^{sus4}

C

G/B

F/A

G/B



King o - ver the flood. I will be still and know You are God.



1.

F Maj9

2,4,5. - Last Time al Coda

C

D 

Verse 2: Find

When the o - ceans

3.

F

A^m

C/G

Instrumental:

1-5.

G

6.

G

D  al  al Coda

Verse 2: Find